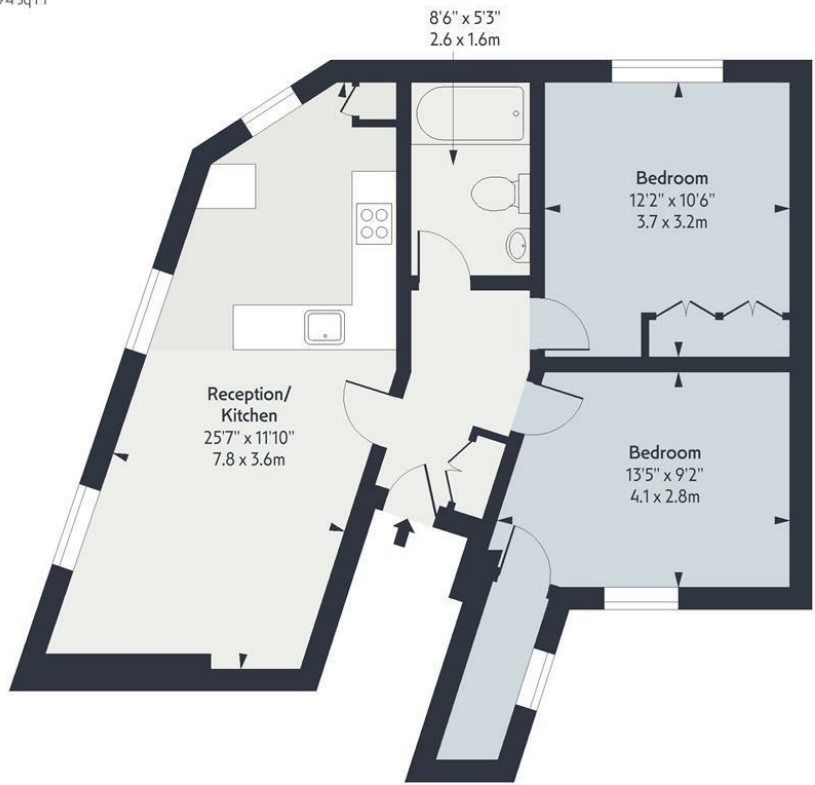


Green Lanes, N16

Approx. Gross Internal Area 656 Sq Ft - 60.94 Sq M



Second Floor

Floor Area 656 Sq Ft - 60.94 Sq M



Measured according to RICS IPMS2. Floor plan is for illustrative purposes only and is not to scale. Every attempt has been made to ensure the accuracy of the floor plan shown, however all measurements, fixtures, fittings and data shown are an approximate interpretation for illustrative purposes only. 1 sq m = 10.76sq feet.

Date: 15/12/2025

Whilst every attempt has been made to ensure the accuracy of the floor plan contained here, measurements of doors, windows, rooms and any other items are approximate and no responsibility is taken for any error, omission or mis-statement. This plan is for illustrative purposes only and should be used as such by any prospective purchaser. The services, systems and appliances shown have not been tested and no guarantee as to their operability or efficiency can be given.



OAKWOOD

OAKWOOD



Green Lanes, N16



OAKWOOD

£2,250

A bright and modern two double bedroom flat located directly opposite Clissold Park.

The property offers two double bedrooms, a well-proportioned open-plan kitchen and living area, providing a practical and comfortable living space. The kitchen is modern and integrates neatly with the reception area.

Ideally positioned close to Church Street and Newington Green, the property benefits from a wide range of local shops, cafés, and transport links, making it well suited to professionals or sharers.





- TWO DOUBLE BEDROOMS
- GREAT LOCATION

- DIRECTLY OPPOSITE CLISSOLD PARK

